

RMP 500

Programmable I/O Controller



"Partners in Production"

www.apialliance.com

RMP 500

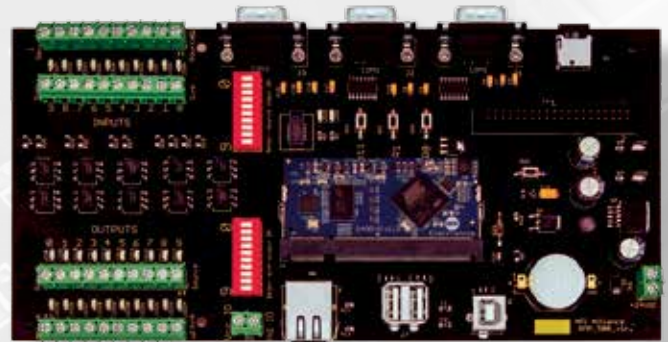
The RMP 500 is an **Adaptable Product Controller** that can even serve as a **Cost-Effective PLC**

Alternative in some applications. We created the RMP Product Family to offer you state of the art technology in an easily programmed and adaptable/customizable format to allow for updating existing product controls with technologies, such as:

- ▶ Realtime clock with battery backup
- ▶ Isolated user selectable I/O
- ▶ USB host
- ▶ Ethernet
- ▶ USB device
- ▶ Serial communication ports
- ▶ Touchscreens available as options

APPLICATIONS:

- ▶ Food Processing Equipment
- ▶ Material Handling
- ▶ Automated Tester



Touchscreen Display Options



- ▶ Field proven
- ▶ Quick turn for standard product design
- ▶ Customizable for your specific requirements

AVAILABLE MODELS:

RMP 543 - 4.3" Display - Tethered

RMP 550 - 5.0" Display - Tethered

RMP 570 - 7.0" Display - Tethered

For more information: contact **KURT WEBBER** - kwebber@apialliance.com **260.637.2739 x111**

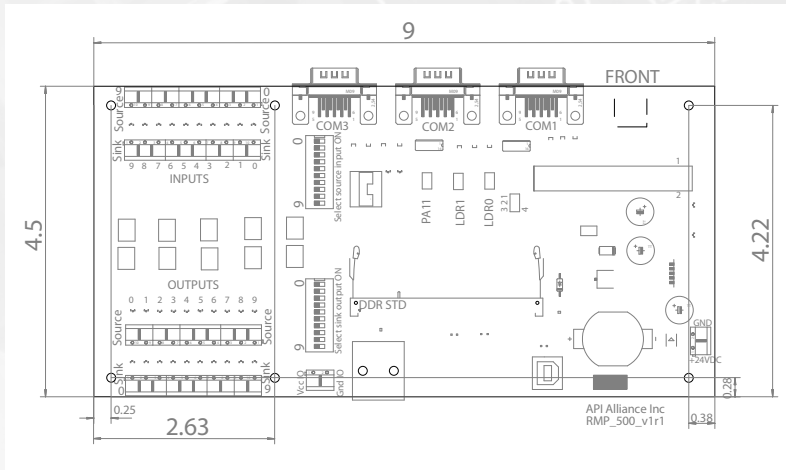
API ALLIANCE 14220 Plank Street Fort Wayne, IN 46818 www.apialliance.com

RMP 500

Programmable I/O Controller



"Partners in Production"
www.apialliance.com



About the RMP 500 Adaptable Product Controller

Cost-Effective PLC Alternative

The RMP 500 is a powerful controller, which utilizes a System on Module (SoM) running .NET Micro Framework, which enables users to program the SoM from Microsoft's Visual Studio using C# or Visual Basic and allows developers to take advantage of the extensive built-in libraries for networking, file systems, graphical interfaces and peripherals. The RMP 500 includes 128 Mbytes of DDR SDRAM, 4 Mbytes of serial Flash. Embedded LCD Controller. USB host/ device with drivers. 4 bit SD card interface. Plenty of essential peripherals such as GPIO, SPI, UART, 12C, CAN, ADC and PWM Ethernet and WiFi. Supports Visual C# and Visual Basic Programming.

FEATURES:

Processor:	400 MHz 32-bit ARM 926EJ-S Core
System Platform:	.Net Micro Framework
User Available Flash:	4 MB
User Available RAM:	128 MB DDR2
UART:	5
SPI:	3
12C:	Yes
Networking:	Ethernet TCP/IP, WiFi, and SSL
CAN:	2
USB Device:	1
USB Host:	2
1-Wire:	Yes
Real Time Clock:	1
In-Field Update:	Yes
Native LCD Controller:	Yes
Supported Image Type:	BMP, GIF, JPG
Memory Cards:	Yes
File System:	FAT16/FAT32
Power Consumption:	150 mA
Operation Temp.:	-40° C to +85° C
Graphics with Touch Screen Display:	Various options available



Designed and Assembled
in the U.S.A.

API ALLIANCE

www.apialliance.com
14220 Plank Street Fort Wayne, IN 46818